

SALIENT FEATURES

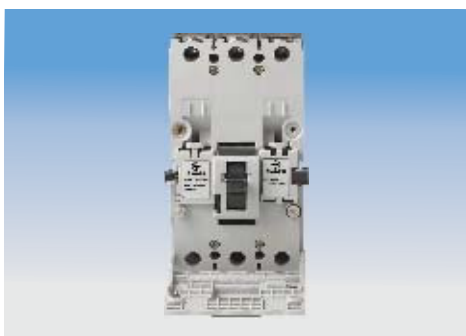


Technology

- Current Limiting MCCBs: The unique speed contact system with current limiting feature accelerates the opening of contacts during short circuit, resulting in very low let-through energy
- No load line bias: Either side of MCCB terminal can be used as load or line*
- MCCB Mechanism: Quick make, quick break & trip free mechanism

Ergonomic Design & User Friendliness

- Knob designed for better grip
- Color indication of ON/TRIP/OFF*
- Current rating on the knob
- Overload adjustment from front*
- Easy ON/OFF/RESET operations



Safe to Use

- Suitable for Isolation*
- Finger proof terminals
- Phase barriers supplied along with MCCBs to enhance the clearance between the phases
- Lockable shroud on thermal knob to prevent unauthorized operation*
- CE marked range*
- Double Insulation

Accessories

- Auxiliary contacts
- Trip alarm contacts
- Combined Auxiliary + Trip alarm contacts*
- Shunt & Under Voltage release*
- Direct & Extended ROM with Padlocking
- Spreader links
- SS Enclosure
- GF module for earth fault protection
- All internal accessories are Snap fit type*



Compact & Easy to Install

- Compact size
- Common depth upto 250A
- 45mm door cutout upto 250A
- Optional DIN rail mounting available**

* For DU100D / DU125D / DU100H / DU125H / DU250C / DU250 / DU400N

** For DU100 / DU125U / DU100B / DU100D / DU125D / DU100H / DU125H

TECHNICAL SPECIFICATIONS

DU Series

Technical Parameters			Specification				
Type Designation			DU100D/DU125D	DU100H/DU125H	DU250C	DU250	DU400N
No. of Poles			3/4	2/3/4	3/4	2/3/4	2/3/4
Rated Current	I_n (A)		20, 25, 32, 40, 50, 63, 80, 100, 125	20, 25, 32, 40, 50, 63, 80, 100, 125	160, 200, 250		320, 400
Impulse Withstand Voltage	U_{imp} (kV) AC		8				8
Rated Operational Voltage	U_e (V) AC		415				690
Rated Insulation Voltage	U_i (V) AC		800				800
Operational Frequency (Hz)			50 / 60				
Utilisation Category			A				
Reference Temperature			40° C				
Operating Temperature			-5°C to + 55°C				
Standard			IS/IEC60947-2, IEC60947-2 & EN60947-2				
I_{cu} (kA)	240V AC		32	65	65	65	65
	415V AC		18	30	25	36	50
	250V DC (2P in series) L/R<15 msec		-	15	-	15	25
	250V DC (3P in series) L/R<15 msec		15	20	15	20	30
	500V DC (3P in series) L/R<15 msec		10	15**	10	15**	20***
Rated Service S. C. Breaking Capacity (I_{cs})			100% of I_{cu}	50% of I_{cu}			
Single Stage Capacitor Rating at 415V, 50Hz (kVAR)			upto 50 kVAR* (for 100A) & 65 kVAR* (for 125A)		upto 95 kVAR*		upto 150 kVAR*
Mechanical Life	No. of operations		40000		15000		10000
Electrical Life	No. of operations		8000 ^s		3000		4000
IP Protection (from front side)			IP40				
Pollution Degree			III				
Type of Release			Thermal - Magnetic				
Thermal			Variable (0.8 - 1.0/ I_n)				
Magnetic			Fixed (9/ I_n)				
Terminal Capacity (without spreaders)							
Cables with Lug (mm ²)			35		120		185
Link (mm)			≤17		≤26		≤32
Overall Dimensions							
Width (mm)			75/100	75/75/100	105/140		140/184
Height (mm)			130		165		205
Depth (mm)			60		60		110.5
Weight (2/3/4 Pole) (kg)			0.85/1.1	0.6/0.85/1.1	1.55/2	1.3/1.55/2	4/5

* Please use Capacitor Duty Contactors with MCCB for Capacitor Applications. Capacitor ratings mentioned are with MO C only.

** 10 kA at 500V d.c. (2P in series) L/R<15 msec

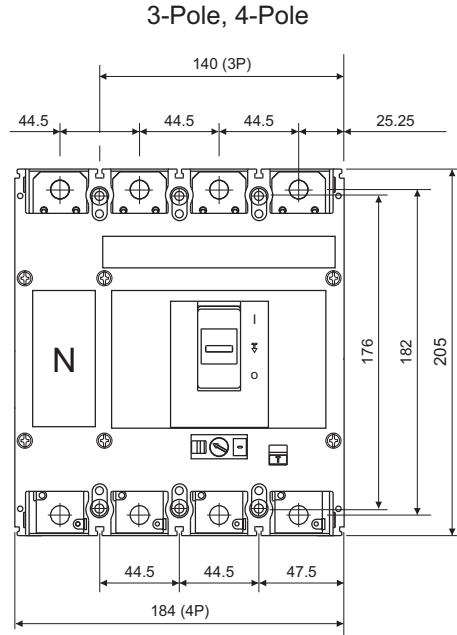
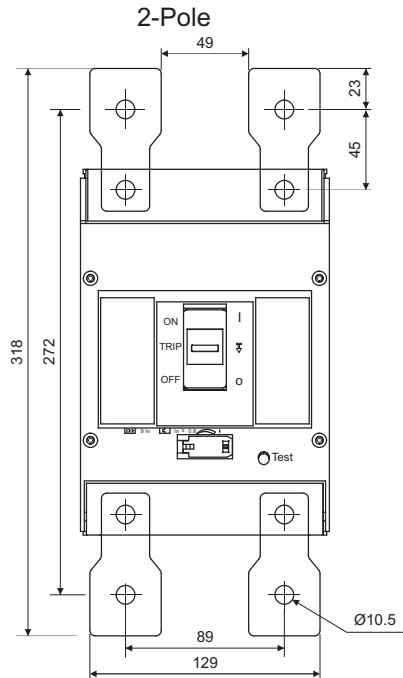
*** 15kA at 500V d.c. (2P in series) L/R<15 msec

\$ 4000 for DU125D/DU125H

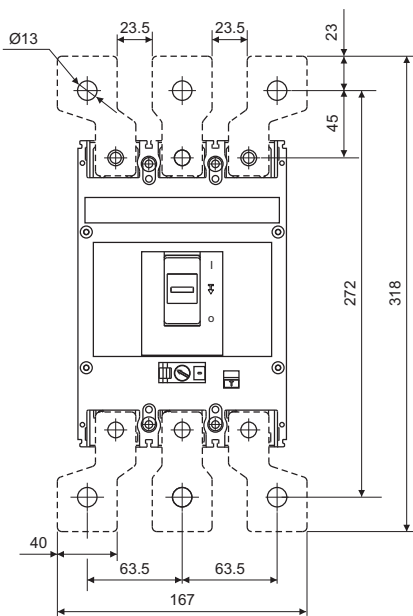
Note : 2P MCCBs are available upto 100A in DU100H

DIMENSIONS

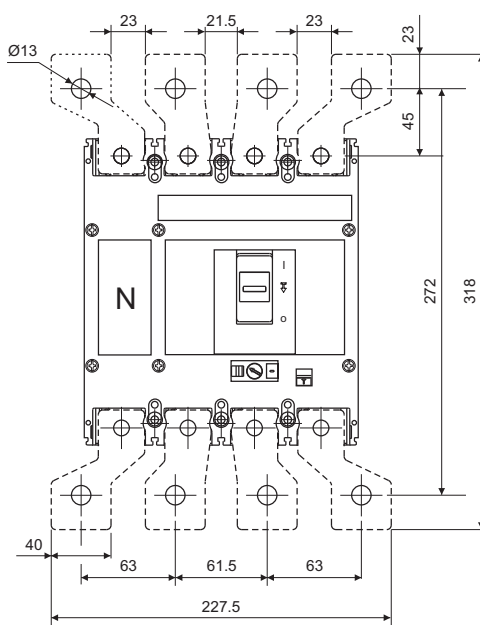
DU400N



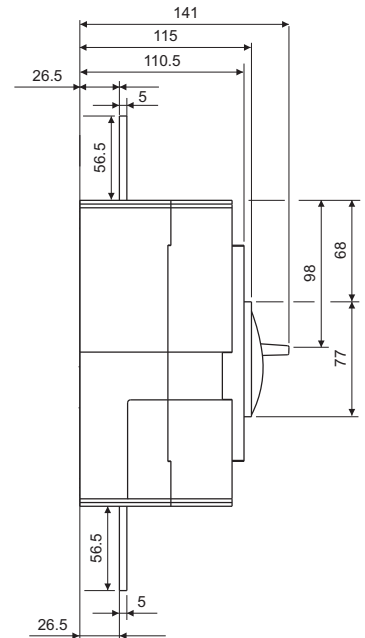
**3-Pole
with Spreaders**



**4-Pole
with Spreaders**



2-Pole, 3-Pole, 4-Pole



Link width (without spreader) : ≤ 32 mm
Link width (with spreader) : 40 mm

Note: Spreaders are available as spare. It is recommended to use spreader links for enhancing termination capacity.